
4 ALBERT EMBANKMENT
LONDON SE1 7SR
Telephone: +44 (0)20 7735 7611 Fax: +44 (0)20 7587 3210

MSC.1/Circ.1430
31 May 2012

**REVISED GUIDELINES FOR THE DESIGN AND APPROVAL OF FIXED WATER-BASED
FIRE-FIGHTING SYSTEMS FOR RO-RO SPACES AND SPECIAL CATEGORY SPACES**

1 The Maritime Safety Committee, at its eighty-fourth session (7 to 16 May 2008), approved the Guidelines for the approval of fixed water-based fire-fighting systems for ro-ro spaces and special category spaces equivalent to that referred to in resolution A.123(V) (MSC.1/Circ.1272).

2 The Committee, at its ninetieth session (16 to 25 May 2012), having considered a proposal by the Sub-Committee on Fire Protection, at its fifty-fifth session, with a view to updating and integrating the prescriptive requirements of the Recommendation on fixed fire-extinguishing systems for special category spaces (resolution A.123(V)) and the performance-based requirements of the Guidelines for the approval of fixed water-based fire-fighting systems for ro-ro spaces and special category spaces equivalent to that referred to in resolution A.123(V) (MSC.1/Circ.1272), approved the Revised Guidelines for the design and approval of fixed water-based fire-fighting systems for ro-ro spaces and special category spaces, as set out in the annex.

3 Member Governments are invited to apply the annexed Guidelines when approving fixed water-based fire-fighting systems for ro-ro spaces and special category spaces on or after 21 May 2012 and bring them to the attention of ship designers, shipowners, equipment manufacturers, test laboratories and other parties concerned.

4 This circular supersedes MSC.1/Circ.1272, except that fire and component tests previously conducted in accordance with MSC.1/Circ.1272, remain valid for the approval of new systems. Existing fixed fire-extinguishing systems for special category spaces approved and installed based on resolution A.123(V) and MSC.1/Circ.1272 should be permitted to remain in service as long as they are serviceable.

ANNEX

REVISED GUIDELINES FOR THE DESIGN AND APPROVAL OF FIXED WATER-BASED FIRE-FIGHTING SYSTEMS FOR RO-RO SPACES AND SPECIAL CATEGORY SPACES

1 General

1.1 These Guidelines and fire tests are intended for the design and approval of fixed water-based fire-fighting systems for open and closed ro-ro spaces and special category spaces defined in SOLAS regulations II-2/3.12, II-2/3.13, II-2/3.35, II-2/3.36, II-2/3.46 and II-2/3.49. Deluge systems can be applied on open ro-ro spaces when the actual wind condition is taken into consideration, for example through the use of high velocity nozzles. Systems using automatic sprinklers or nozzles are only permitted for closed ro-ro and special category spaces or other spaces where wind conditions are not likely to affect system performance.

1.2 These Guidelines are intended to replace both the prescriptive requirements of resolution A.123(V) for conventional water spray systems and the performance-based requirements of circular MSC.1/Circ.1272 for automatic sprinkler and deluge systems. All systems should comply with sections 1, 2 and 3. In addition, prescriptive-based systems should comply with section 4, and performance-based systems should comply with section 5.

2 Definitions

2.1 *Area of operation* is a design area for wet-pipe, automatic sprinkler system (to be determined for performance-based systems by the test procedure described in the appendix to these Guidelines).

2.2 *Automatic sprinkler or nozzle* is a single or multiple orifice water discharge device that activates automatically when its heat-activated element is heated to its thermal rating or above, allowing water under pressure to discharge in a specific, directional discharge pattern.

2.3 *Automatic system* is a system utilizing either automatic sprinklers or nozzles or a system that is automatically activated by a fire detection system.

2.4 *Deluge system, automatic and manual release* is a system employing open nozzles attached to a piping system connected to a water supply through a valve that can be opened by signals from a fire detection system and by manual operation. When this valve is opened, water flows into the piping system and discharges from all nozzles attached thereto.

2.5 *Deluge system, manual release* is a system employing open nozzles attached to a piping system connected to a water supply through a valve that is opened by manual operation. When this valve is opened, water flows into the piping system and discharges from all nozzles attached thereto.

2.6 *Dry pipe system* is a system employing automatic sprinklers or nozzles attached to a piping system containing air or nitrogen under pressure, the release of which (as from the activation of a sprinkler or nozzle by heat from a fire) permits the water pressure to open a valve known as a dry pipe valve. The water then flows into the piping and discharges from the open nozzles or sprinklers.

2.7 *Fire control* limits the size of a fire by distribution of water so as to decrease the heat release rate, while controlling ceiling gas temperatures and pre-wetting adjacent combustibles and/or reducing heat radiation to avoid structural damage.

2.8 *Fire suppression* is the sharp reduction of the heat release rate of a fire and the prevention of regrowth.

2.9 *K-factor* is a sprinkler nozzle discharge coefficient determined by testing, that is used to calculate flow rate at any given pressure through the relationship $Q = k P^{1/2}$, where Q is the flow rate in litres per minute, and P is the pressure in bars.

2.10 *Open sprinkler or nozzle* is an open single or multiple orifice water discharge device that, when discharging water under pressure, will distribute the water in a specific, directional discharge pattern.

2.11 *Performance based requirements* are based on the results of fire tests conducted on specific nozzle design and arrangements. The required engineering parameters for such systems are determined by the results of the fire tests.

2.12 *Prescriptive based requirements* are specific requirements, such as minimum water discharge density or maximum nozzle spacing, and are applied equally to all systems designed to this approach.

2.13 *Pump* means a single water pump, with its associated driver and control or an individual pump within a pump unit.

2.14 *Pump unit* means a single water pump, or two or more pumps connected together to form a unit, with their associated driver(s) and controls.

2.15 *Pre-action system* is a system employing automatic sprinklers or nozzles attached to a piping system containing air that may or may not be under pressure, with a supplemental fire detection system installed in the same area as the sprinklers or nozzles. Activation of the fire detection system opens a valve that permits water to flow into the system piping and to be discharged from any sprinkler or nozzle that has operated.

2.16 *Water-based extinguishing medium* is fresh water or seawater, with or without an antifreeze solution and/or additives to enhance fire-extinguishing capability.

2.17 *Water discharge density* is the unit rate of water application to an area or surface expressed in mm/min (equal to $(l/min)/m^2$).

2.18 *Wet pipe system* is a system employing automatic sprinklers or nozzles attached to a piping system containing water and connected to a water supply so that water discharges immediately from sprinklers or nozzles opened by heat from a fire.

3 Principal requirements for all systems

3.1 The system may be automatically activated, automatically activated with provisions for manual activation or manually activated.

3.2 All systems should be divided into sections. Each section should be capable of being isolated by one section control valve. The section control valves should be located outside the protected space, be readily accessible without entering the protected spaces and their locations should be clearly and permanently indicated. It should be possible to manually open and close the section control valves either directly on the valve or via a control system routed outside of the protected spaces. Means should be provided to prevent the operation of the section control valves by an unauthorized person. Control valve locations should be adequately ventilated to minimize the build-up of smoke.

3.3 The piping system should be sized in accordance with a hydraulic calculation technique¹ such as the Hazen-Williams hydraulic calculation technique or the Darcy-Weisbach hydraulic calculation technique, to ensure the availability of the flows and pressures required for correct performance of the system. The design of the system should ensure that full system pressure is available at the most remote sprinkler or nozzle in each section within 60 s of activation.

3.4 The system supply equipment should be located outside the protected spaces and all power supply components (including cables) should be installed outside of the protected space. The electrical components of the pressure source for the system should have a minimum rating of IP 54.

3.5 Activation of an automatic system should give a visual and audible alarm at a continuously manned station. The alarm in the continuously manned station should indicate the specific section of the system that is activated. The system alarm requirements described within this paragraph are in addition to, and not a substitute for, the detection and fire alarm system required by SOLAS regulation II-2/20.4.

3.6 Wet pipe systems on board vessels that can operate in areas where temperatures below 0°C can be expected, should be protected from freezing either by having temperature control of the space, heating coils on pipes, antifreeze agents or other equivalent measures.

3.7 The capacity of the system water supply should be sufficient for the total simultaneous coverage of the minimum coverage area of tables 4-1 to 4-3 and 5-1 and the vertically applicable area as defined in paragraph 3.22.

3.8 The system should be provided with a redundant means of pumping or otherwise supplying a water-based extinguishing medium to the system. The capacity of the redundant means should be sufficient to compensate for the loss of any single supply pump or alternative source. Failure of any one component in the power and control system should not result in a reduction of required pump capacity of deluge systems. In the case of wet pipe, dry pipe and pre-action systems, failure of any one component in the power and control system should not result in a reduction of the automatic release capability or reduction of required pump capacity by more than 50 per cent. However, systems requiring an external power source need only be supplied by the main power source. Hydraulic calculations should be conducted to assure that sufficient flow and pressure are delivered to the hydraulically most demanding section both in normal operation and in the event of the failure of any one component.

3.9 The system should be fitted with a permanent sea inlet and be capable of continuous operation during a fire using sea water.

3.10 The system and its components should be designed to withstand ambient temperatures, vibration, humidity, shock, impact, clogging and corrosion normally encountered. Piping, pipe fittings and related components except gaskets inside the protected spaces should be designed to withstand 925°C. Distribution piping should be constructed of galvanized steel, stainless steel, or equivalent. Sprinklers and nozzles should comply with paragraph 3.11.

¹ Where the Hazen-Williams Method is used, the following values of the friction factor *C* for different pipe types which may be considered should apply:

<i>Pipe type</i>	<i>C</i>
Black or galvanized mild steel	100
Copper and copper alloys	150
Stainless steel	150

3.11 The system and its components should be designed and installed based on international standards acceptable to the Organization². The nozzles should be manufactured and tested based on the relevant sections of appendix A to circular MSC/Circ.1165 (Revised Guidelines for the approval of equivalent water-based fire-extinguishing systems for machinery spaces and cargo pump-rooms).

3.12 A means for testing the automatic operation of the system and, in addition, assuring the required pressure and flow should be provided.

3.13 If the system is pre-primed with water containing a fire suppression enhancing additive and/or an antifreeze agent, periodic inspection and testing, as specified by the manufacturer, should be undertaken to assure that their effectiveness is being maintained. Fire suppression enhancing additives should be approved for fire protection service by an independent authority. The approval should consider possible adverse health effects to exposed personnel, including inhalation toxicity.

3.14 Operating instructions for the system should be displayed at each operating position.

3.15 Installation plans and operating manuals should be supplied to the ship and be readily available on board. A list or plan should be displayed showing spaces covered and the location of the zone in respect of each section. Instructions for testing and maintenance should be available on board.

3.16 Spare parts should be provided as recommended by the manufacturer. In the case of automatic sprinkler systems, the total number of spare sprinkler heads for each type of sprinklers shall be six for the first 300, 12 for the first 1,000.

3.17 Where automatic systems are installed, a warning notice should be displayed outside each entry point stating the type of medium used (i.e. water) and the possibility of automatic release.

3.18 All installation, operation and maintenance instruction/plans for the system should be in the working language of the ship. If the working language of the ship is not English, French or Spanish, a translation into one of these languages should be included.

3.19 Any foam concentrates used as system additives should comply with the Revised Guidelines for the performance and testing criteria and surveys of foam concentrates for fixed fire-extinguishing systems (MSC.1/Circ.1312).

3.20 Means for flushing of systems with fresh water should be provided.

3.21 The presence of obstructions and the potential for shielding of the water spray should be evaluated to ensure that the system performance is not affected. Supplementary sprinklers or nozzles should be installed beneath obstructions. In addition, nozzles should be located to protect spaces above and below intermediate decks, hoistable decks and ramps. Nozzles below hoistable decks should be capable of protecting all applicable heights.

² Pending the development of international standards acceptable to the Organization, national standards as prescribed by the Administration should be applied.

3.22 Vertically the applicable area of all decks, including hoistable decks or other intermediate decks, between reasonably gas-tight steel decks (or equivalent materials), should be included for simultaneous coverage (example: with one hoistable deck, both the layer above and below this deck with a dimensioning area complying with tables 4-1 to 4-3 or 5-1 should be included in the water supply calculations). Decks with ramps are accepted as reasonably gas-tight decks assuming that the ramps are always in their closed position at sea and the ramps and the decks which these ramps are part of are reasonably gas-tight.

3.23 All release controls for deluge systems, monitor(s) for any CCTV system, the control panel (or an indication panel) for the fire detection system, water pressure on the discharge side of all pump units, and the position indication of all section valves should be available and grouped together in a continuously manned control station or the safety centre, if provided.

3.24 The length of a deluge section (along the lanes) should not be less than 20 m and the width of the section should not be less than 14 m. Further, the sections need not be longer or wider than the distance between reasonably gas-tight steel bulkheads (or equivalent materials). The maximum size of a section on any single deck should be 48 m multiplied by the width of cargo space (measured as distance between tight steel divisions). Vertically one section can cover up to three decks.

4 Additional prescriptive-based system design requirements

In addition to the requirements in section 3, systems designed with this approach should comply with paragraphs 4.1 to 4.10.

4.1 Wet pipe, dry pipe and pre-action systems should be designed for simultaneous coverage of the hydraulically most demanding area at the minimum water discharge density given in tables 4-1 to 4-3. The minimum operating pressure of any sprinkler should be 0.05 MPa.

4.2 Deluge systems should be designed for the simultaneous activation of the two adjacent deluge sections with the greatest hydraulic demand at the minimum water discharge density given in tables 4-1 to 4-3. The minimum operating pressure of any sprinkler should be 0.12 MPa.

Table 4-1 Minimum required water discharge density and area of coverage for decks having a free height equal to or less than 2.5 m

Type of system	Minimum water discharge density (mm/min)	Minimum coverage area
Wet pipe system	6.5	280 m ²
Dry pipe or pre-action system	6.5	280 m ²
Deluge system	5	2 x 20m x B ¹

Table 4-2 Minimum required water discharge density and area of coverage for decks having a free height in excess of 2.5 m but less than 6.5 m

Type of system	Minimum water discharge density (mm/min)	Minimum coverage area
Wet pipe system	15	280 m ²
Dry pipe or pre-action system	15	365 m ²
Deluge system	10	2 x 20 m x B ¹

Table 4-3 Minimum required water discharge density and area of coverage for decks having a free height in excess of 6.5 m but less than 9.0 m

Type of system	Minimum water discharge density (mm/min)	Minimum coverage area
Wet pipe system	20	280 m ²
Dry pipe or pre-action system	20	365 m ²
Deluge system	15	2 x 20 m x B ¹

¹ B = full breadth of the protected space.

4.3 Automatic sprinklers or nozzles intended for decks with a free height equal to or less than 2.5 m should have a nominal operating temperature range between 57°C and 79°C and standard response characteristics. If required by ambient conditions, higher temperature ratings may be acceptable.

4.4 Automatic sprinklers or nozzles intended for decks with a free height in excess of 2.5 m and hoistable decks that can be raised above 2.5 m should have a nominal operating temperature range between 121°C and 149°C and standard response characteristics.

4.5 Sprinklers or nozzles should be positioned at or within 0.6 m of the underside of the deck, in order to distribute water over and between all vehicles or cargo in the area being protected. Automatic sprinklers or nozzles should be positioned and located so as to provide satisfactory performance with respect to both activation time and water distribution. The maximum horizontal spacing between nozzles or sprinklers should not exceed 3.2 m.

4.6 Only upright sprinklers or nozzles are allowed for dry pipe or pre-action systems.

4.7 For wet pipe and dry pipe sprinkler systems, fire detection systems should be installed in accordance with the requirements of SOLAS regulation II-2/20.4.

4.8 For manual deluge systems, automatic deluge systems and pre-action systems, fire detection systems should be provided complying with the International Code for Fire Safety Systems (FSS Code) and the following additional requirements:

- .1 the detection system should consist of flame, smoke or heat detectors of approved types, arranged as described below. The flame detectors should be installed under fixed continuous decks according to the limitation and application defined by the maker and the approval certificate. The smoke and heat detector arrangement shall comply with the FSS Code. Smoke detectors with a spacing not exceeding 11 m or heat detectors with a spacing not exceeding 9 m should be installed under hoistable ramps;
- .2 the detection system should ensure rapid operation while consideration should also be given to preventing accidental release. The area of coverage of the detection system sections should correspond to the area of coverage of the extinguishing system sections. The following arrangements are acceptable:
 - .1 set-up of approved flame detectors and approved smoke detectors or heat detectors; or
 - .2 set-up of approved smoke detectors and approved heat detectors; other arrangements can be accepted by the Administration;

- .3 for automatic deluge systems and pre-action systems, the discharge of water should be controlled by the detection system. The detection system should provide an alarm upon activation of any single detector and discharge if two or more detectors activate. The Administration may accept other arrangements; and
- .4 automatically released systems should also be capable of manual operation (both opening and closing) of the section valves. Means should be provided to prevent the simultaneous release of multiple sections that result in water-flow demand in excess of the pumping system design capacity. The automatic release may be disconnected during on- and off-loading operations, provided that this function is automatically reconnected after a pre-set time being appropriate for the operations in question.

4.9 Where beams project more than 100 mm below the deck, the spacing of spot-type heat detectors at right angles to the direction of the beam travel should not be more than two thirds of the spacing permitted under chapter 9 of the FSS Code.

4.10 Where beams project more than 460 mm below the deck and are more than 2.4 m on centre, detectors should be installed in each bay formed by the beams.

5 Additional performance-based system design requirements

In addition to the requirements in section 3, systems designed with this approach should comply with paragraphs 5.1 to 5.6.

5.1 The system should be capable of fire suppression and control and be tested to the satisfaction of the Administration in accordance with the appendix to these Guidelines.

5.2 The nozzle location, type of nozzle and nozzle characteristics should be within the limits tested to provide fire suppression and control as referred to in paragraph 5.1.

5.3 System designs should be limited to the use of the maximum and minimum temperature ratings of the thermally sensitive fire detection devices tested to provide fire suppression and control as referred to in paragraph 5.1.

5.4 The capacity of the system water supply should be sufficient for the total simultaneous coverage of the minimum coverage area of table 5-1 and the vertically applicable area as defined in paragraph 3.22, and the requirements of paragraph 5.5.

Table 5-1 Minimum coverage area per type of system

Type of system (Definition number)	Minimum coverage area
A. Wet pipe, automatic sprinkler heads (2.18)	280 m ² or area of operation as defined in the fire tests – whichever is larger
B. Deluge system, automatic ¹ and manual release (2.4)	280 m ² and the overlapping or adjacent section as defined by paragraph 5.5 ²
C. Deluge system, manual release (2.5)	2 sections each of min 20 m x B ^{2,3}
D. Other systems (2.6, 2.15)	Equivalent to the above systems and to the satisfaction of the Administration

¹ The automatic release should comply with the requirements of paragraph 5.6.

² The pump should be sized to cover the largest section for type B systems and the two largest horizontally adjacent sections for type C systems.

³ B = full breadth of the protected space.

5.5 The section arrangement for a deluge system with automatic and manual release (system B) should be such that a fire in any location of the border zone between two or more sections would be completely surrounded by activated spray heads, either by activating more than one section or by overlapping sections (whereby two or more sections cover the same area in the vicinity of the border between sections). In case of overlapping sections, such overlap should be a minimum of two times the required spray head spacing of the section in question or five metres, whichever is larger. These overlapping sections need not comply with the minimum width and length requirements of paragraph 3.24.

5.6 For systems of type B (see table 5-1) an efficient fire detection and fire confirmation system covering all parts of the ro-ro or special category spaces should be provided as follows:

- .1 the fire detection system shall consist of flame detectors and smoke detectors of approved types. The flame detectors shall be installed under fixed continuous decks according to the limitation and application defined by the maker and the approval certificate. The smoke detector arrangement shall comply with the FSS Code. Additional smoke detectors with a spacing not exceeding 11 m shall be installed under hoistable ramps;
- .2 a colour TV monitoring system should cover all parts of the ro-ro or special category spaces. Cameras need not be installed below hoistable decks if the camera arrangement can identify smoke (confirm fire) based on positions under a fixed continuous deck; and
- .3 the relevant section of the deluge system should be automatically released when two detectors covering this area activate. Systems being released when only one detector activates may also be accepted. Automatically released systems should also be capable of manual operation (both opening and closing) of the section valves. The automatic release may be disconnected during on- and off-loading operations, provided that this function is automatically reconnected after a preset time being appropriate for the operations in question.

Appendix

TEST METHOD FOR FIXED WATER-BASED FIRE-FIGHTING SYSTEMS FOR RO-RO SPACES AND SPECIAL CATEGORY SPACES

1 SCOPE

1.1 This test method is intended for evaluating the effectiveness of fixed water-based fire-fighting systems installed in ro-ro spaces and special category spaces with deck heights up to and including 5 m and/or up to and including 2.5 m.

1.2 The test programme has two objectives:

- .1 establishing nozzle location, nozzle characteristics, minimum water delivery rate and minimum water pressure for systems which will provide the required level of system response time, suppression and control; and
- .2 establishing the minimum area of operation of the system for the purpose of determining hydraulic design requirements for wet pipe, dry pipe and preaction systems.

2 GENERAL REQUIREMENTS

2.1 Sampling

The nozzles and other components to be tested should be supplied by the manufacturer together with design and installation criteria, operational instructions, drawings and technical data sufficient for the identification of the components.

2.2 Tolerances

Unless otherwise stated, the following tolerances should apply:

- .1 length: $\pm 2\%$ of value;
- .2 volume: $\pm 5\%$ of value;
- .3 pressure: $\pm 3\%$ of value; and
- .4 temperature: $\pm 2\%$ of value.

2.3 Observations

The following observations should be made during and after each test:

- .1 time of ignition;
- .2 activation time of first nozzle;
- .3 time when water flows out through first nozzle;
- .4 time when water flow is shut off;
- .5 time when the test is terminated; and
- .6 total number of activated nozzles.

2.4 Test hall and environmental conditions

The test hall where the tests are conducted should have a minimum floor area of 300 m² and a ceiling height in excess of 8 m. The test hall may be equipped with a forced ventilation system, or be natural ventilated, in order to ensure that there is no restriction in air supply to the test fires. The test hall should have an ambient temperature of between 10 and 25°C at the start of each test.

2.5 Measurement equipment

Temperatures should be measured using plain K-type thermocouple wires not exceeding 0.5 mm in diameter. The thermocouple head should be protected against direct water impingement, e.g. by tin cans.

System water pressure should be measured by using suitable equipment. Total water flow rate should be determined by a direct measurement or indirectly by using the pressure data and "k" factor of the nozzles.

The measurements should be made continuously throughout the tests.

2.6 System operational conditions

The tests should simulate the conditions of an actual installed system regarding objectives such as time delays between the activation of the system and minimum system water pressure or water delivery. In addition, the use of a pre-primed fire suppression enhancing additive, if applicable, should be taken into account.

3 DETERMINATION OF FIRE SUPPRESSION AND CONTROL CAPABILITIES

3.1 Principle

These test procedures test the effectiveness of a water-based fire-fighting system against two different scenarios: a cargo fire in a simulated freight truck, and a passenger vehicle fire.

3.2 Fire source

3.2.1 The primary fire source for both scenarios consists of EUR standard wood pallets (ISO 6780:2003), stored inside with the moisture content of $14 \pm 2\%$. Figure 3.2.1 shows details of a EUR pallet.

3.2.2 Plywood panels made of pine or spruce are used as targets. The panels should be approximately 12 mm thick. The ignition time of the panel should not be more than 35 s and the flame spread time at 350 mm position should not be more than 100 s as measured in accordance with resolution A.653(16).

3.2.3 For ignition, commercial heptane should be applied.

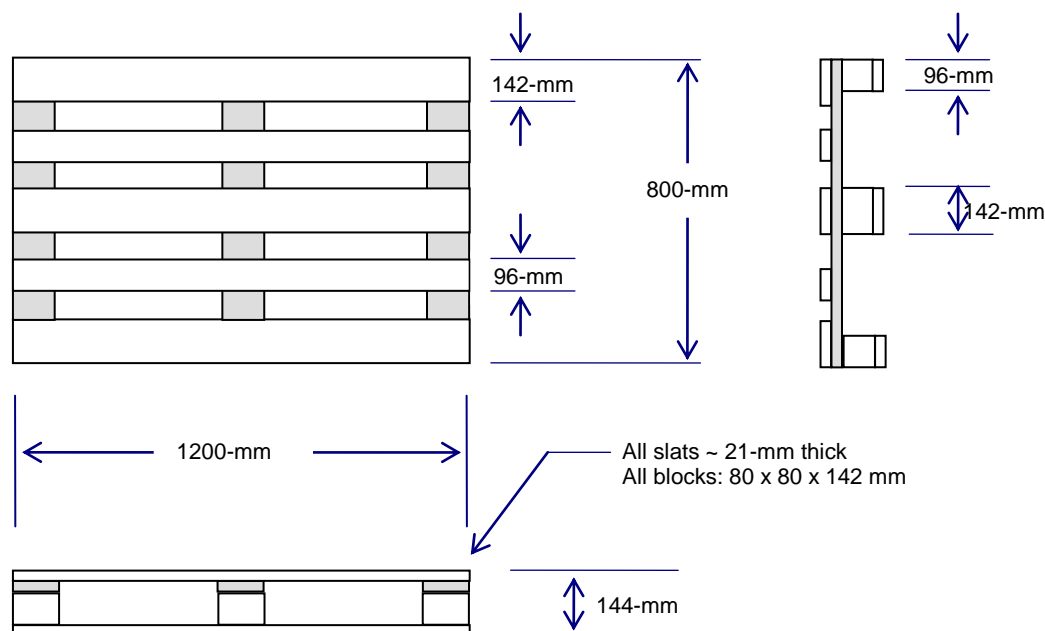


Figure 3.2.1 – Typical dimensions of the standard EUR pallet

3.3 Apparatus

3.3.1 Test area

The tests should be conducted in a test hall as specified in paragraph 2.4 above, under a flat, smooth, non-combustible ceiling of at least 100 m². There should be at least a 1 m space between the perimeters of the ceiling and any wall of the test hall.

3.3.2 Fire scenario 1: cargo fire in a simulated freight truck (see figures 3.3.2.1 to 3.3.2.3)

3.3.2.1 The primary fuel package consists of 112 wood pallets arranged in an array of 2 (wide) x 7 (high) x 8 (long) and raised up on a level of 2.8 m so that the top level of the fuel package is at 3.8 to 3.9 m above the floor.

3.3.2.2 The support frame for the wood pallet array of paragraph 3.3.2.1 should be constructed using open steel racks. The wood pallet piles should be standing freely on horizontal steel beams without any solid bottoms.

3.3.2.3 The fuel pallet array should be half-shielded by a 4.5 m long, 2.6 m wide steel plate (thickness at least 2 mm) at 4 m height. The plate should be properly fixed so that during a test it does not bend to provide an unobstructed passage of water onto the fuel package.

3.3.2.4 Plywood panel targets (acting also as obstructions) of dimensions 3.6 m (wide) x 2.4 m (high) should be arranged symmetrically on both sides of the fuel package at 1 m distance so that the top edge is at the same level as the top level of the wood pallet array.

3.3.2.5 The fire should be ignited by two steel trays centrally located under the fuel package as shown in figures 3.3.2.1 to 3.3.2.3. The square trays are 25 cm high and 0.1 m² of free surface area. The trays should be filled with water and 1 l of heptane so that the free rim height above the liquid surface is 4 cm. The distance between the bottom of the wood pallet piles and liquid surface is 29 cm.

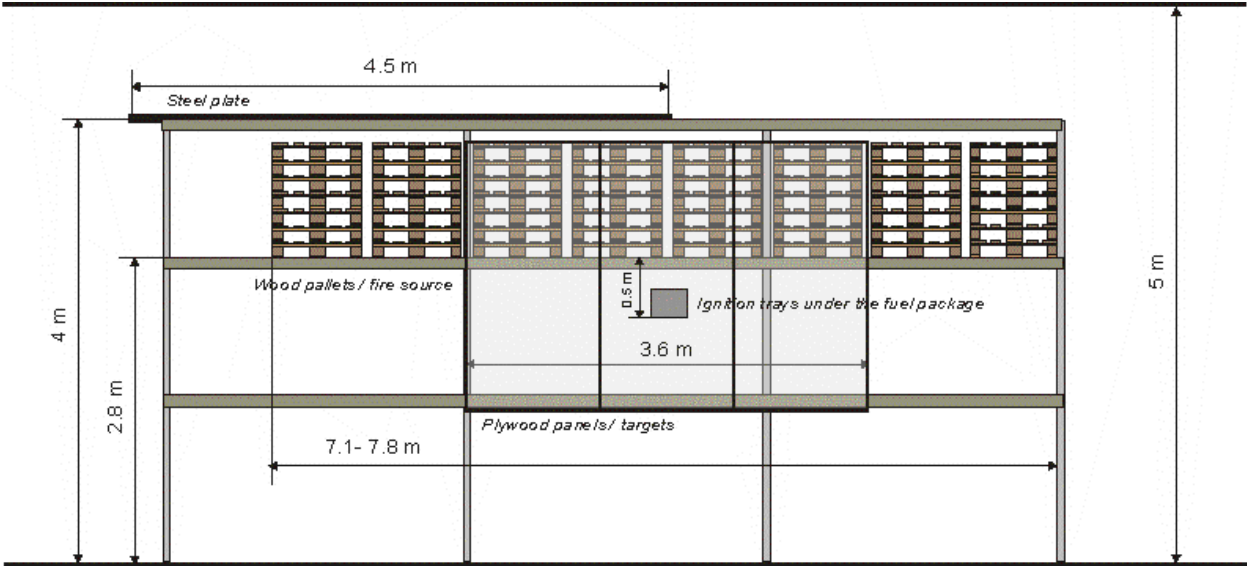


Figure 3.3.2.1 – Side view of the cargo fuel package in a simulated truck

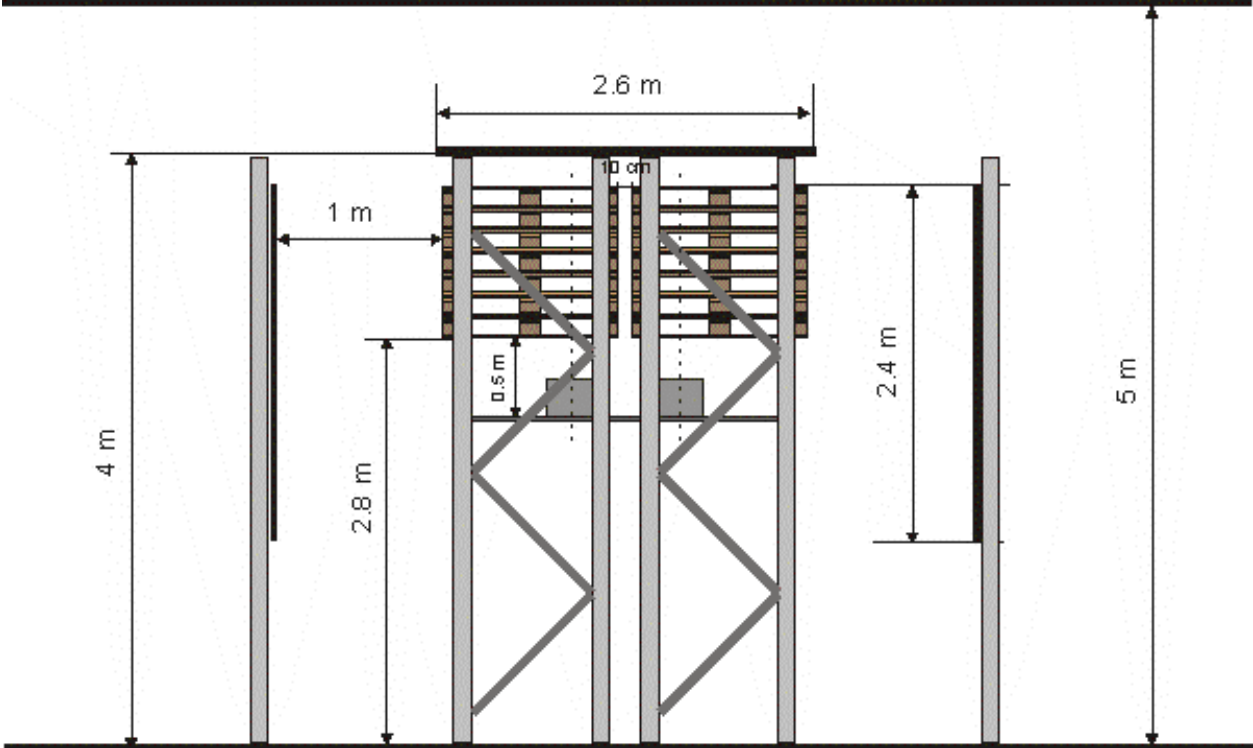


Figure 3.3.2.2 – End view of the cargo fuel package in a simulated truck

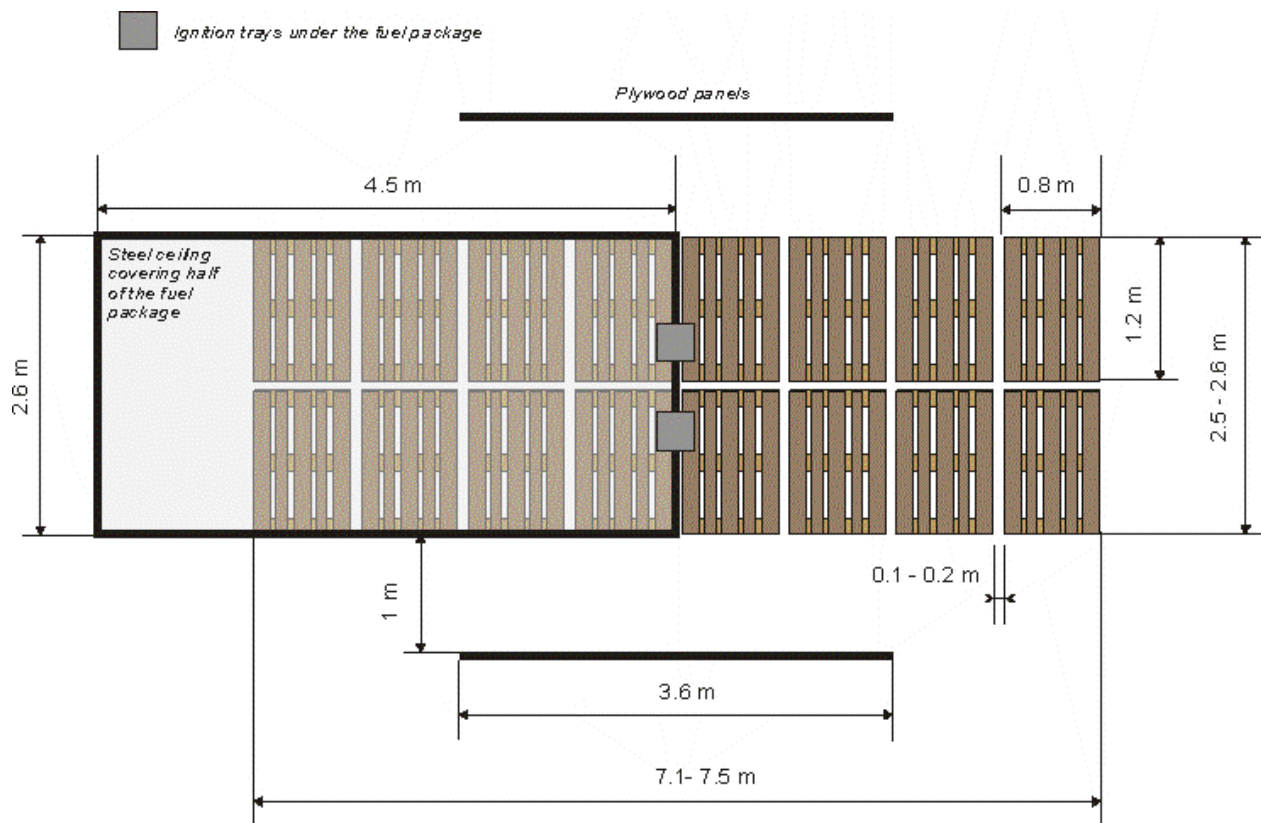


Figure 3.3.2.3 – Top view of the cargo fuel package in a simulated truck

3.3.3 **Fire scenario 2: passenger vehicle fire** (see figures 3.3.3.1 and 3.3.3.2)

3.3.3.1 The primary fuel package consists of 12 wood pallets arranged in an array of 1 pallet (wide) x 6 pallets (high) x 2 pallets (long) constructed inside a passenger vehicle mock-up.

3.3.3.2 The passenger vehicle mock-up is constructed of nominally 2 mm steel.

3.3.3.3 Plywood panel targets (acting also as obstructions) of dimensions 1.2 m (wide) x 1.75 m (high) should be arranged symmetrically on both sides of the mock-up at 0.6 m distance so that the top edge is at the same level as the top level of the mock-up car.

3.3.3.4 The fire should be ignited by a steel tray centrally located under the fuel package as shown in figures 3.3.3.1 and 3.3.3.2. The square tray is 10 cm high and 0.1 m² of free surface area. The tray should be filled with water and 1 l of heptane so that the free rim height above the liquid surface is 4 cm.

3.4 **Nozzle positioning**

3.4.1 Nozzles should be installed in an array at the ceiling level in accordance with the manufacturer's design and installation criteria. Tests should be repeated with three different relative locations between the nozzle array and the fuel package, i.e. centre of ignition under one nozzle, between two nozzles and between four nozzles, as shown in figure 3.4.1.

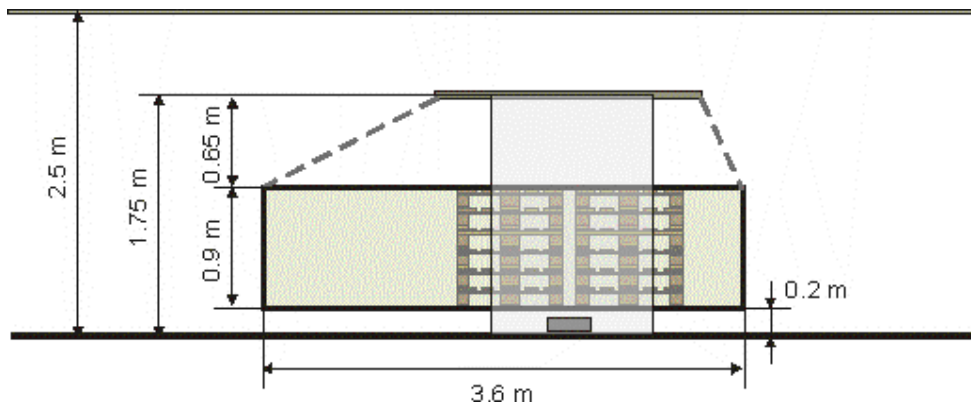


Figure 3.3.3.1 – Side view of the passenger vehicle fuel package
(The dashed lines visualize the shape of a car; the ceiling plate is to be fixed in its location as found most practical)

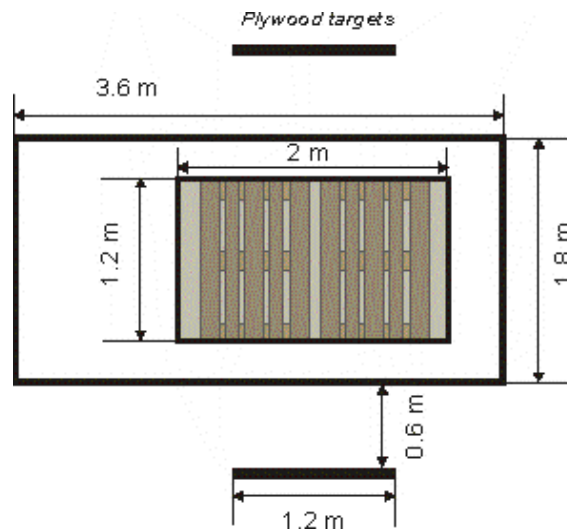


Figure 3.3.3.2 – Top view of the passenger vehicle fuel package

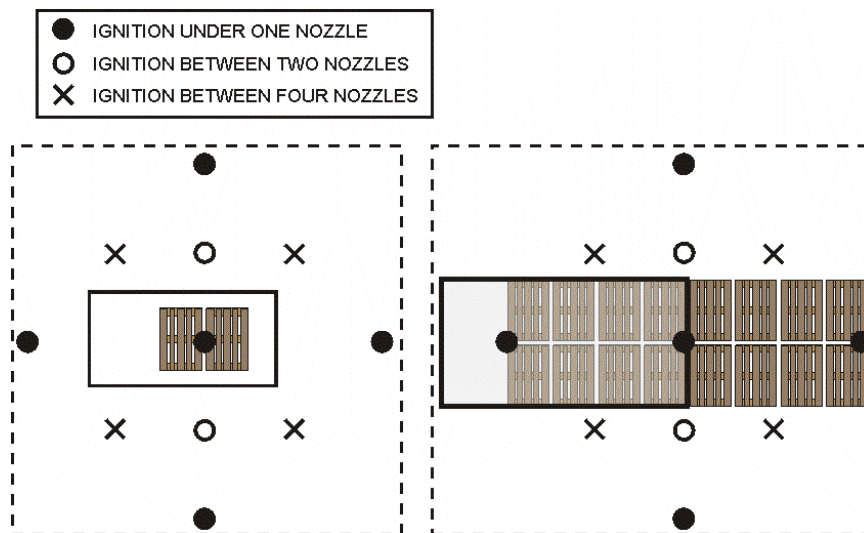


Figure 3.4.1 – Nozzle positioning in the two scenarios

3.5 Instrumentation

3.5.1 Instrumentation for the continuous measuring and recording of test conditions should be employed. At least the following measurements should be made:

- .1 gas temperature at 7.5 cm below the ceiling at locations shown in figure 3.5.1;
- .2 gas temperature at the targets to indicate ignition of targets as shown in figure 3.5.2; and
- .3 system water pressure near the centre of the piping array.

3.5.2 System water flow rate should be defined with suitable means for the system.

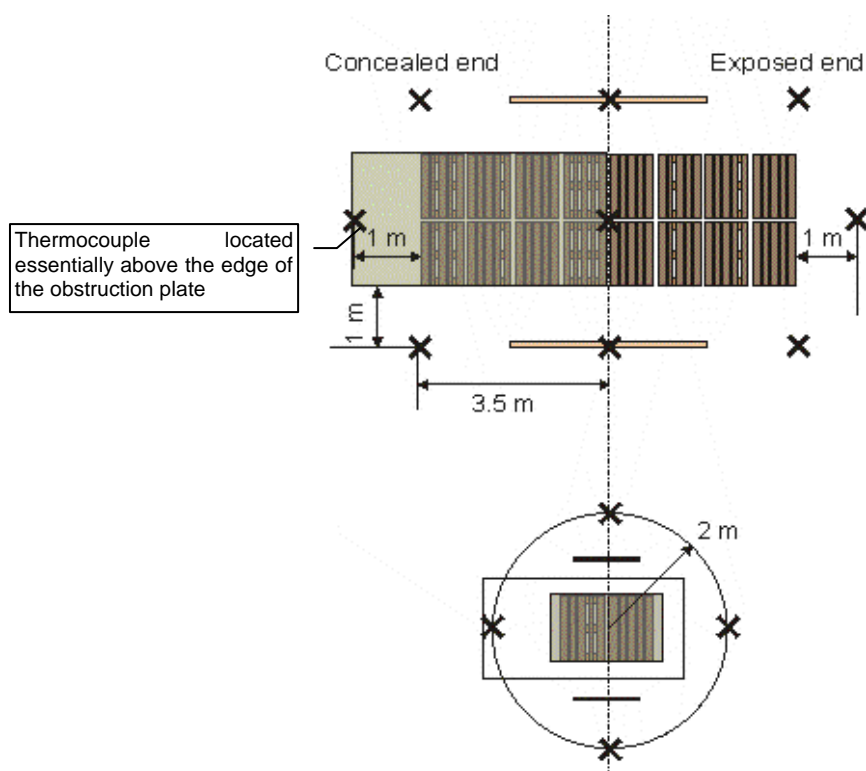


Figure 3.5.1 – Thermocouple locations in the two scenarios³

³ For the truck fuel package the three locations at both ends are used for acceptance evaluation, the three locations at and around the centre of ignition are for safety purposes to define during the test whether the ceiling is at danger. For the passenger car fuel package all four locations are used for acceptance evaluation.

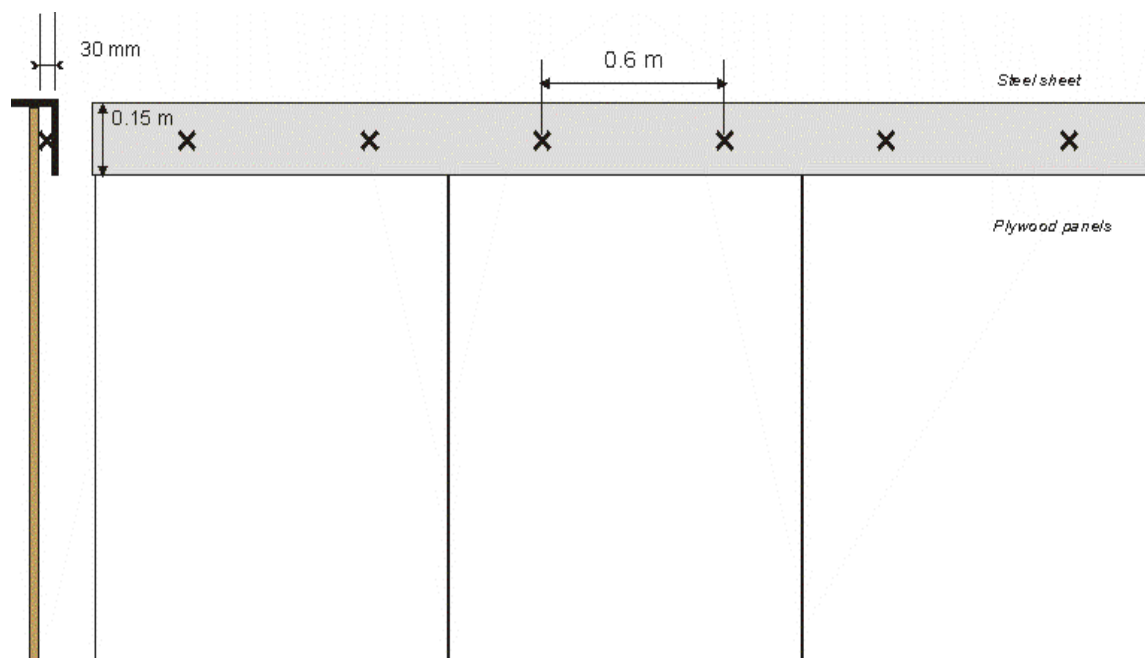


Figure 3.5.2 – Thermocouple locations at the plywood targets for determining ignition of targets⁴

3.6 Test programme and test procedure

3.6.1 Test programme

3.6.1.1 Tests should be conducted at the minimum system water pressure at the minimum distance between the lowest part of the nozzles and the ceiling, as specified by the manufacturer.

3.6.1.2 Three tests should be conducted at ceiling heights 5 m and/or 2.5 m, with different nozzle grid locations relative to the fuel package as specified in figure 3.4.1.

3.6.2 Test procedure

3.6.2.1 Prior to starting the test the moisture content of the fuel package should be measured at several locations along the full package with a probe-type moisture meter and the results should be reported.

3.6.2.2 The actual test procedure for all tests is as follows:

- .1 the water pressure used at the start of the test should be set at the minimum value for the system specified by the manufacturer, flowing six open nozzles. If more than six nozzles operate during the test, the water supply pressure should be adjusted accordingly, to keep the required minimum system water pressure;
- .2 the tray should be filled with 1 litre of heptane on the water base as described in paragraph 3.3.2.5 or 3.3.3.4;

⁴ A thin (about 1 mm) steel sheet is bent on top of the plywood panels as shown in the figure. Plain charring of panels is seen as a sharp edge between the black charring on the exposed surface and intact surface under the metal sheet. When ignited in flames charring is seen also under the sheet and verified by significant increase in the gas temperature under the metal sheet.

- .3 the measurements are started;
- .4 the flammable liquid pool fire(s) should be lit by means of a torch or a match;
- .5 the fire should be allowed to burn freely for a period of 2.5 min;*
- .6 the test is continued for 30 min after system activation;
- .7 any remaining fire should be manually extinguished; and
- .8 the test is terminated.

3.7 Acceptance criteria

The principal acceptance criteria are based on the following factors:

- .1 gas temperatures measured at locations not directly affected by impinging flames;
- .2 damage to the fuel package; and/or
- .3 ignition of targets.

Note 1: Damage to the fuel package is defined by the fraction of charring of the full package. The damage to each individual wood pallet should be evaluated separately and the total fraction calculated based on the detailed results. Totally black, i.e. totally charred pallet is denoted as 100 per cent damage of the pallet (even though the pallet may have maintained its shape) and totally intact pallet is denoted as 0 per cent damage. Partially charred pallets should be visually evaluated. Proper and adequate photographs of the damaged fuel package should be included in the test report.

Note 2: Ignition of targets is defined by the method described in figure 3.5.2, if the visibility during the test is such that it cannot be visually observed.

3.7.1 *Fire scenario 1: cargo fire in a simulated freight truck (ceiling height 5 m)*

The following four criteria should be met:

- .1 after system activation the maximum five minute average at any of the three measurement locations at the exposed end of the fuel package should not exceed 300°C;
- .2 after system activation the maximum five minute average at any of the three measurement locations at the concealed end of the fuel package should not exceed 350°C;
- .3 total damage to the wood pallet array should not exceed 45 per cent as defined after the test; and
- .4 the plywood targets should not ignite during the test.

*

If automatic sprinklers activate already during the 2.5 min pre-burn period, feeding water to the system should be delayed till after the 2.5 min.

3.7.2 **Fire scenario 2: passenger vehicle fire**

The following two criteria should be met:

- .1 after system activation the maximum five minute average at any of the four measurement locations should not exceed 350°C; and
- .2 the plywood targets should not ignite during the test.

4 DETERMINATION OF AREA OF OPERATION

4.1 Both fire scenarios include hidden fires that burn intensely throughout the tests. The suppression tests as defined in paragraph 3.6.1 can be applied in establishing the area of operation of wet pipe, dry pipe and pre-action systems. The evaluation is based on the test with the largest number of nozzles activating.

4.2 The ceiling area of 100 m² as defined in paragraph 3.3.1 most likely is not sufficient for defining the area of operation. The ceiling should be large enough to allow installation of a sufficient number of nozzles so that it is unambiguous that the nozzles activating truly represent the maximum number of active nozzles.

4.3 The area of operation is determined by multiplying the largest number of nozzles activating in the tests by two and defining the corresponding coverage area.

5 TEST REPORT

The test report should, as a minimum, include the following information:

- .1 name and address of the test laboratory;
- .2 date of issue and identification number of the test report;
- .3 name and address of applicant;
- .4 name and address of manufacturer or supplier of the nozzles;
- .5 test method and purpose;
- .6 nozzle identification;
- .7 description of the tested nozzles and system performance;
- .8 detailed description of the test set-up including drawings and photos of the fuel package and targets before and after the tests;
- .9 date of tests;
- .10 measured nozzle pressure and flow characteristics;
- .11 identification of the test equipment and used instruments;
- .12 test results including observations and measurements made during and after the test;
- .13 deviations from the test method;
- .14 conclusions; and
- .15 date of the report and signature.